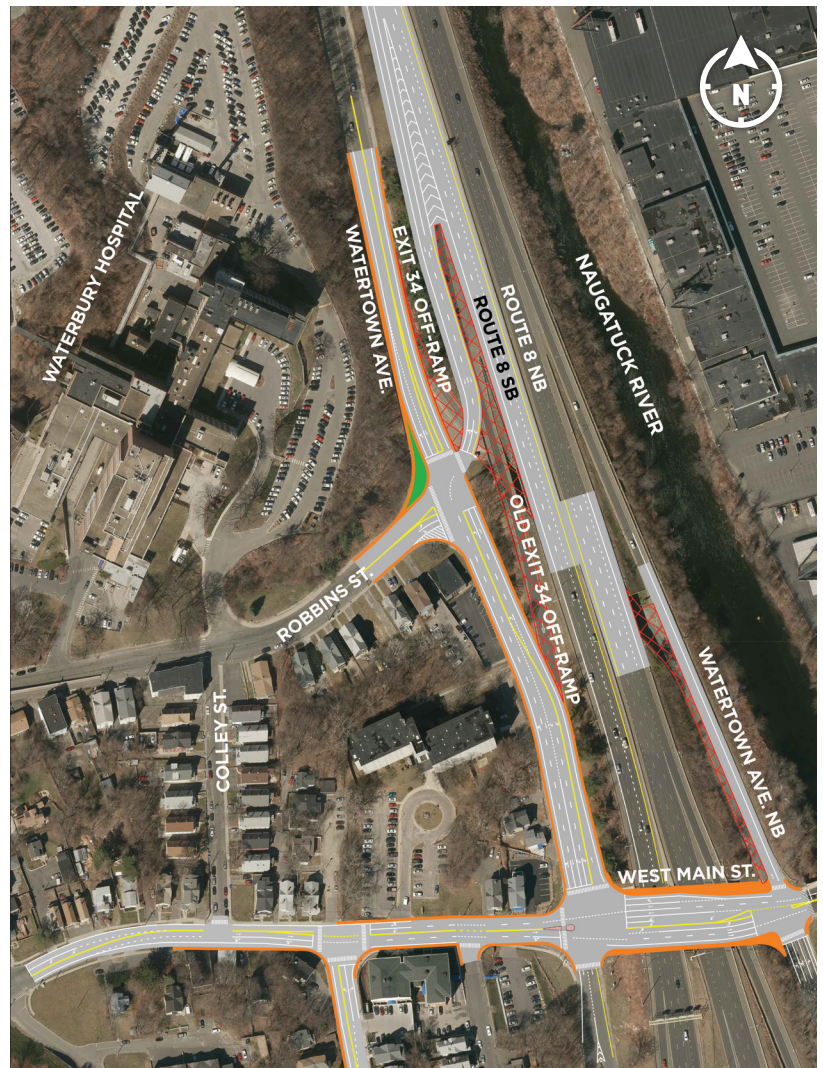


Realignment of Route 8 Southbound (SB) Exit 34 Off-Ramp at Watertown Avenue and Robbins Street

The purpose of the Project is to improve safety, traffic operations, and air quality on Route 8 SB in the vicinity of Exits 34 and 35 and West Main Street.

This project proposes to:

- Relocate the Route 8 SB Exit 34 Off-Ramp from its current terminus at West Main Street to the intersection of Robbins Street and Watertown Avenue.
- Repurpose the existing Route 8 SB Exit 34 Off-Ramp to convert SB Watertown Avenue to a bidirectional roadway (south of Robbins Street).
- Improve lane configuration and traffic signals along West Main Street from west of Colley Street to Riverside Street (NB).
- Realign the Route 8 SB Exit 35 On-Ramp and provide pavement marking modifications for an additional option lane to Exit 34 Off-Ramp.



Project area

This Project is an Early Action breakout project of the New Mix PEL Study, State Project Number 151-331.

Early Action
Projects

Mid to late 2020s

Near-Term
Projects

Late 2020s to mid 2030s

Long-Term
Projects

Mid 2030s to 2045

Incremental Improvements. Increased Functionality. Enhanced Safety.

Realignment of Route 8 Southbound (SB) Exit 34 Off-Ramp at Watertown Avenue and Robbins Street

Benefits:

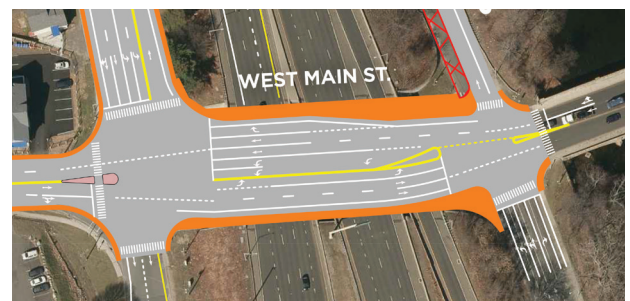
- Direct access to Waterbury Hospital from Route 8 SB
- Improved traffic operations on Route 8 SB between Exits 34 & 35
- Improved traffic operations along West Main Street
- Improved pedestrian connections within Project area
- Welcoming streets with wayfinding signage



Relocated off-ramp to Robbins Street

Schedule:

- November 2023 Concept Public Information Meeting
- Mid 2026 - Public Information Meeting
- Late 2027 - Design Completion
- 2028-2030 - Construction



Lane reconfiguration of West Main Street

For more information, contact:

Jonathan Dean, PE

New Mix Project Manager

Connecticut Department of Transportation

(860) 594-3211 jonathan.dean@ct.gov

